

27th July 2007!!!!!!

Successful Completion of Site Acceptance Test TNB's SCADA/DA System for Northern-Eastern Regional Control Center



SUCCESS STORY CONTINUES...

Further to [successful completion of the factory acceptance test](#) for Northern-Eastern Regional Control Center on 15th June 2007, InControl Tech Sdn. Bhd. (iTEC) has successfully completed the site acceptance test for the same system on 27th July 2007. The control center is located in Seberang Jaya, Penang. It is responsible for operations, monitoring and control of TNB's distribution network in the states of Penang, Perak, Kedah, Perlis, Pahang, Terengganu and Kelantan. The system is now capable of handling more than 1,000 primary substations and more than 40,000 customer substations.

With the great coordination and cooperation between iTEC and the customer TNB, all erection works were completed within 3 weeks. These includes:

1. Erection of the Master System equipment such as servers, workstations, printers, communication equipments, time and frequency display units etc. in Seberang Jaya, Penang.
2. Erection and commissioning of the uninterruptible power supply system for the master system in Seberang Jaya;
3. Control center cable laying and termination;
4. Control center furniture assembly and erection;
5. Erection and commissioning of the Remote Front End systems (remote data concentrator) at 12 different locations through out Malaysia.

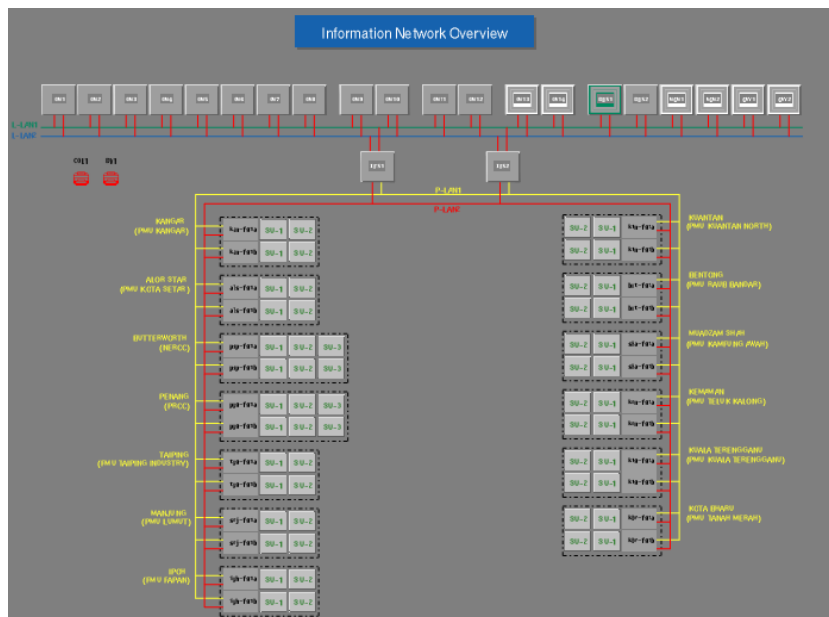
The Site Acceptance Test (SAT) commenced on 16th July 2007 for a period of 2 weeks. The SAT team consists of TNB's specialist, KEMA consultant, iTEC and PSI CNI competent engineers. The test was conducted smoothly, and TNB declared acceptance of the Master System during the SAT Closing Meeting on 27th July 2007.

With less than **8 months**, the SCADA System was completed and handed over to the client. For master system of such huge scale, this is definitely one for the most excellent record in the region, if not worldwide.

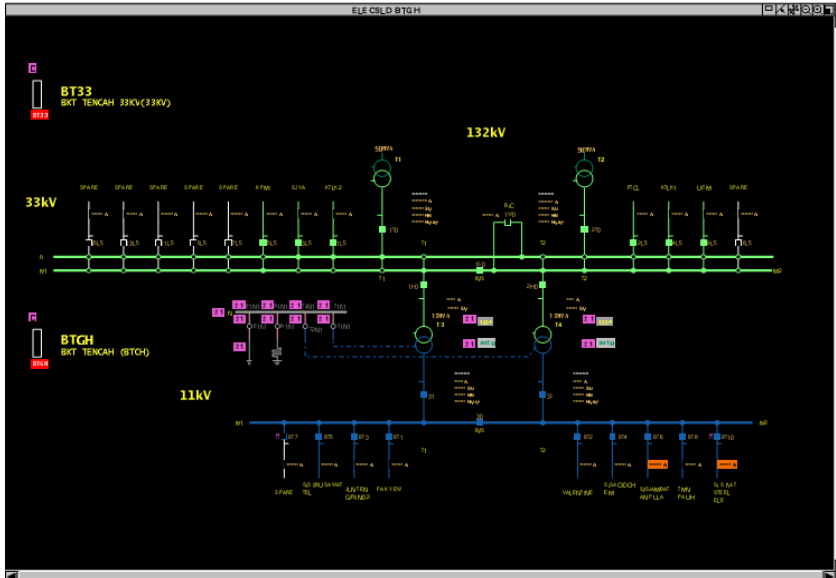
Achievement of such great record was only possible with the great teamwork exhibited by the TEAM. Great thanks and warmest congratulations to the excellent team members, formed by TNB, iTEC, PSI-CNI and KEMA.



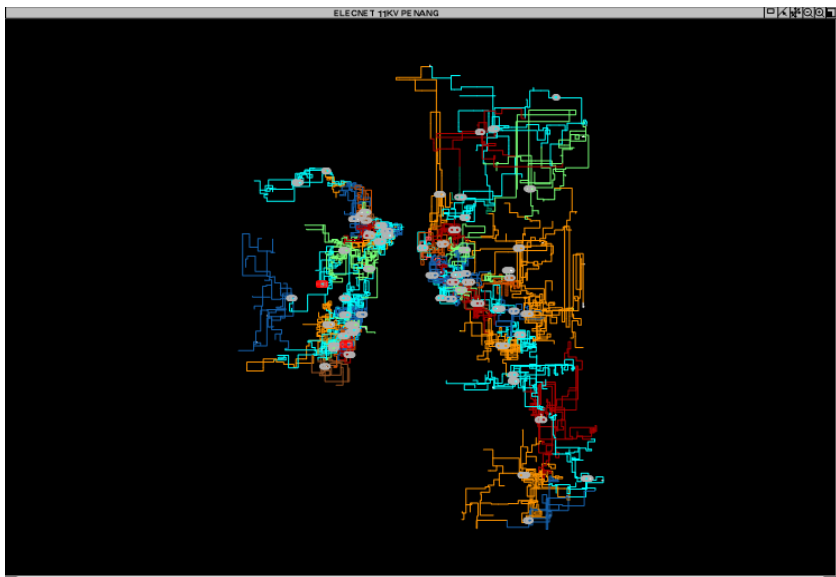
NERCC: Responsible Area



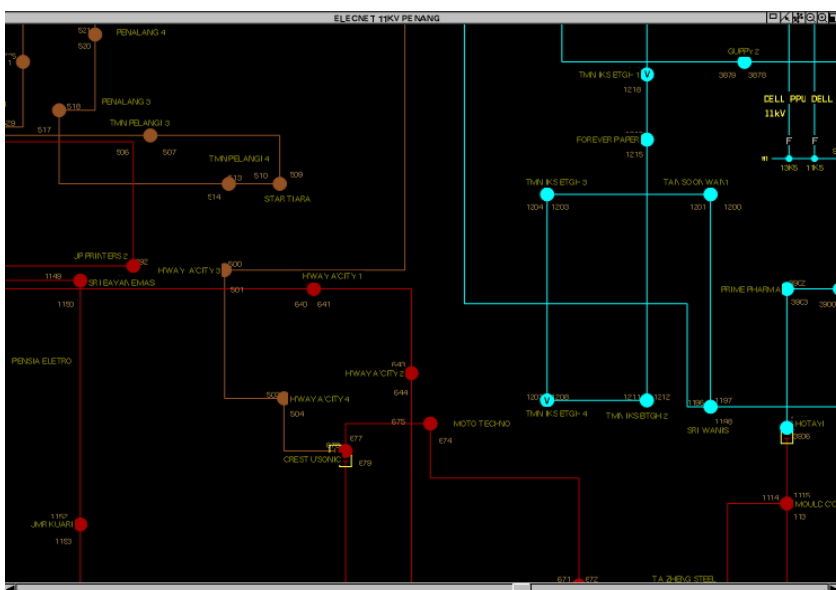
NERCC: Information Network – Overview of Servers and RFEs



NERCC:
Typical Single Line
Diagram



NERCC:
11kV Electrical Network of
Penang State



NERCC:
Typical Detailed Network
Picture



Snapshots: Servers, communication equipment



Snapshots taken during the Site Acceptance Test



Snapshots: Typical Remote Front End Systems



Snapshots: Training for TNB Controllers