

Telibong Water Treatment Plant successful FAT of System and Treated water pumping station LCP

On 22/05/2007-We have successfully completed FAT for 100 hours reliability run of overall system test of Telibong Water Treatment Plant.

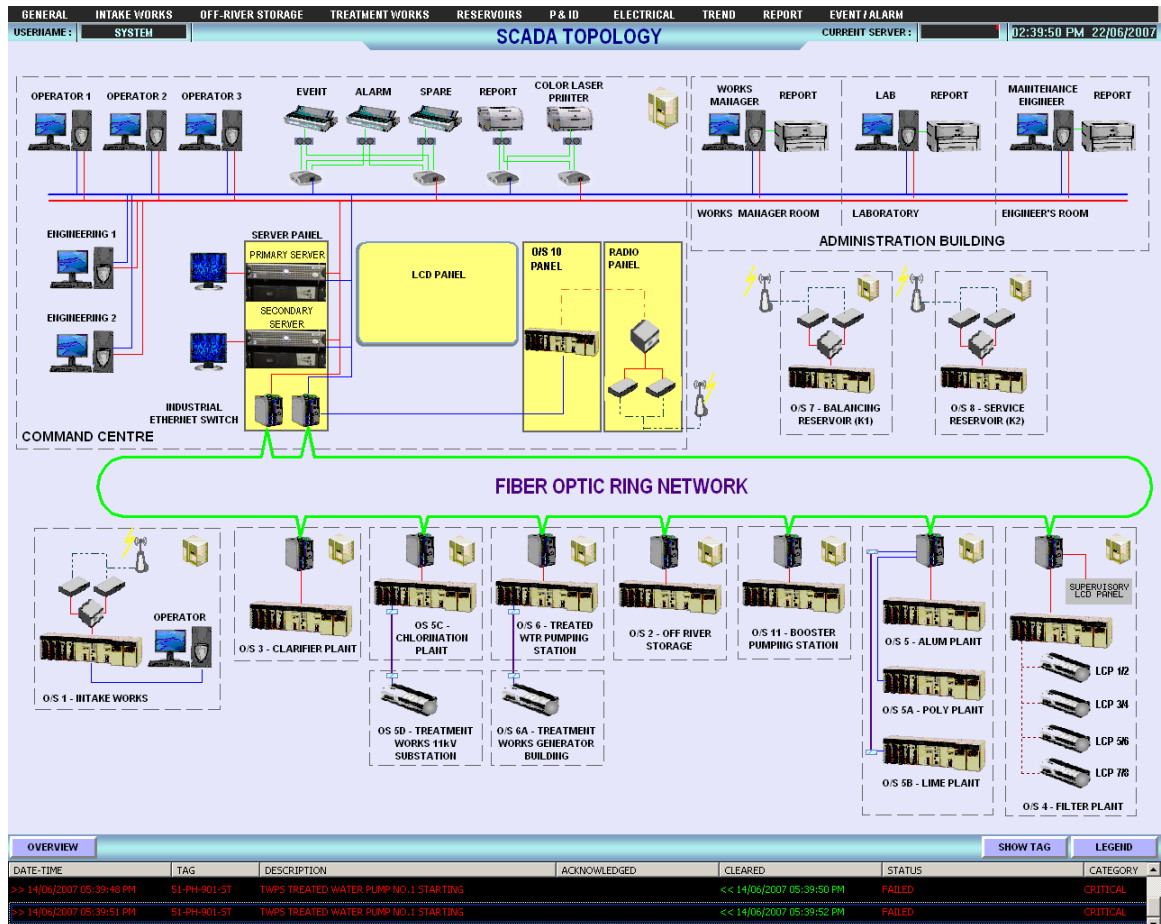


Fig. 1. SCADA Topology of Telibong Water Treatment Plant

On 14/06/2007- The last process plant's LCP FAT – Treated water pumping station has been completed.



Fig. 2. Treated water pumping station layout.

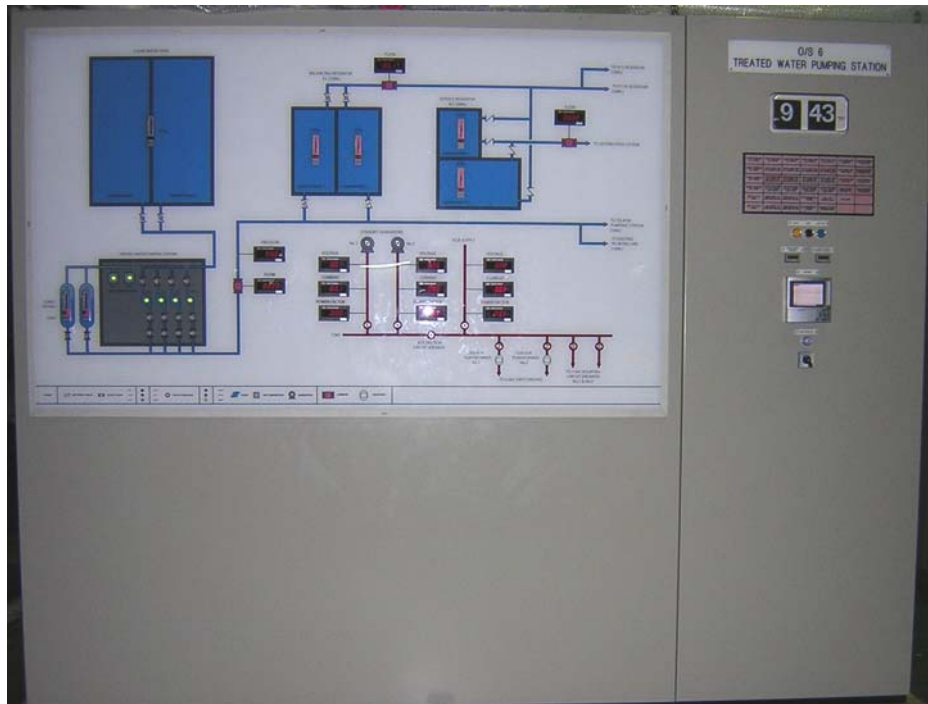


Fig 3: Panel Images